

# Chippenham Museum

Chippenham Town Council



# ARTSPACE

## @Chippenham Museum

From May to July 2019, Chippenham Museum is looking for local artists, designers and makers to be involved in a new annual programme of exhibitions and displays.

ARTSPACE@Chippenham Museum is open to solo artists working across any medium, and to individuals or groups of artists interested in exhibiting together.

- Spaces are available for 2-4 weeks
- Single or double gallery spaces are available
- Change over day on Fridays
- Opportunities available to sell items in the museum shop and put on workshops and events alongside the displays to further showcase your work

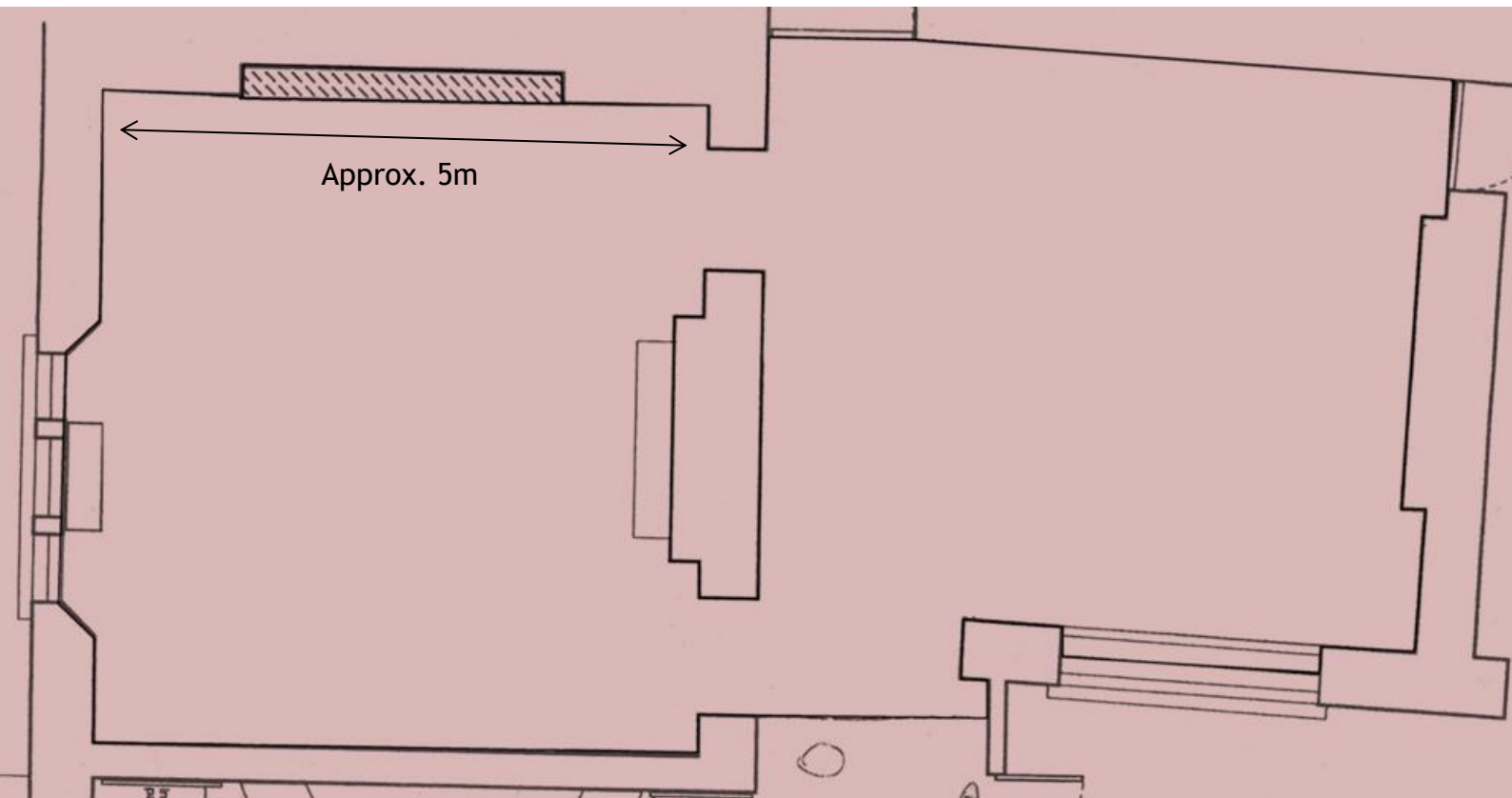
If you would be interested in exhibiting as part of ARTSPACE@Chippenham Museum, please visit [www.chippenham.gov.uk/museum](http://www.chippenham.gov.uk/museum) and complete the online application form, by 17 Feb. Successful applicants will be contacted early March.

The gallery spaces are available on the following dates:

- 4 May - 18 May
- 18 May - 1 June
- 1 June - 15 June
- 15 June - 29 June
- 29 June - 13 July

Available facilities include:

- Two gallery spaces (each 25m<sup>2</sup>) available individually or together
- Permanent wall cabinet with adjustable shelving and lighting
- Two permanent upright display cases with adjustable shelving and lighting
- Three table display cases with adjustable light - available on request
- Flexible and easy to use hanging system
- Fully adjustable lighting system



Please note; while we will endeavour to showcase as many artists as we can, it may not be possible to include all who apply. If the programme is successful we hope to continue it annually, so there will be other opportunities to exhibit at Chippenham Museum in the future.